

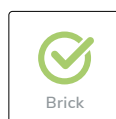
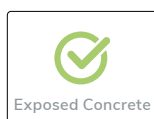
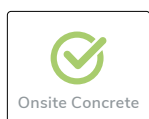
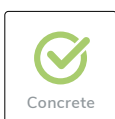
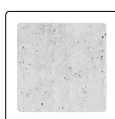
B-SYSTEM

INSTALLATION SOLUTIONS



Wallboxx

Universal Installation Backbox
for Concrete and Brick Walls



For brick and concrete walls

The Wallboxx is the universal backbox for brick and concrete walls. It integrates seamlessly into the workflow for easy processing of the wall surface during construction as the Wallboxx can already replace bricks during construction. Retrofitting into brick walls is also possible.

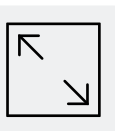
The right backbox for home cinema

The Wallboxx allows the speakers to be installed on the wall, for example in the living room and home cinema rooms. With excellent vibration damping and powerful audio reproduction, the Wallboxx enables unique experiences and unforgettable sound.



Brick and Concrete Walls

Ideal backbox for in-wall loudspeakers and LCR loudspeakers, for new buildings or renovations



Universal

Square, rectangular and large LCR speakers are easily installed thanks to a number of available volumes



Sound Support & Protection

Supports the sound quality of the installation loudspeaker, minimizes airborne and structure-borne noise and protects against moisture and dust

Professional installation, easy integration

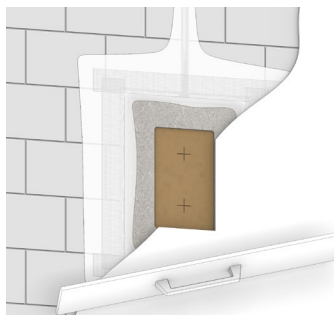
The front and rear walls of the Wallboxx are made of quartz-coated OSB panels, therefore the backbox integrates seamlessly into the workflow for easy further processing of the wall surface. The surrounding EPS base body is low-resonance and has sound-insulating properties.



- ✓ Modular product in six standard sizes
- ✓ High stability
- ✓ Excellent vibration damping
- ✓ Powerful audio reproduction
- ✓ High airborne and structure-borne sound insulation
- ✓ Fixed break-out points for electrical conduits
- ✓ Prefabricated loudspeaker cut-outs available upon request
- ✓ Special sizes on request

Product	Volume	Dimensions	Cut-out Dimensions (max.)
Wallboxx XS	6.30 l	390 × 290 × 120 mm	270 × 170 mm (L × W)
Wallboxx S	10.20 l	590 × 290 × 120 mm	470 × 170 mm (L × W)
Wallboxx M	9.90 l	435 × 390 × 120 mm	315 × 270 mm (L × W)
Wallboxx L	17.00 l	590 × 435 × 120 mm	470 × 315 mm (L × W)
Wallboxx XL	30.10 l	990 × 435 × 120 mm	870 × 315 mm (L × W)
Wallboxx XXL	43.30 l	1390 × 435 × 120 mm	1270 × 315 mm (L × W)

The Wallboxx series in detail:



B-System GmbH

B-System backboxes are standard solutions for the easy integration of loudspeakers and technology in concrete ceilings, brick or concrete walls and in drywall constructions.

Our system architecture allows for a wide range of options, even for demanding applications, and is suitable for all common loudspeaker brands and models.


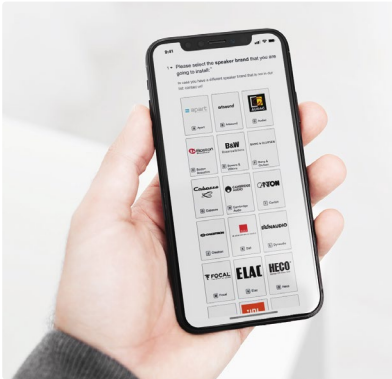
We use only high-quality and robust components. Our backboxes support the audio quality of all built-in

speakers and protect the technology from dirt, moisture, dust and insects.

Our products have been in use thousands of times world-wide for many years, our installation workflows are established and standardised. B-System customers and partners have access to numerous planning documents, data sheets and installation instructions.

The B-System team will be happy to consult you personally!

Easily find the right backbox for your loudspeakers:



Backbox Finder

Downloads:



Downloads



Warehouse
3,000 sqm



Shipping
Worldwide



Tools
Backbox Finder



Warranty
3 Years



Consultation
Individual

Quality



Made in Germany