

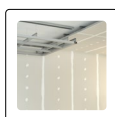
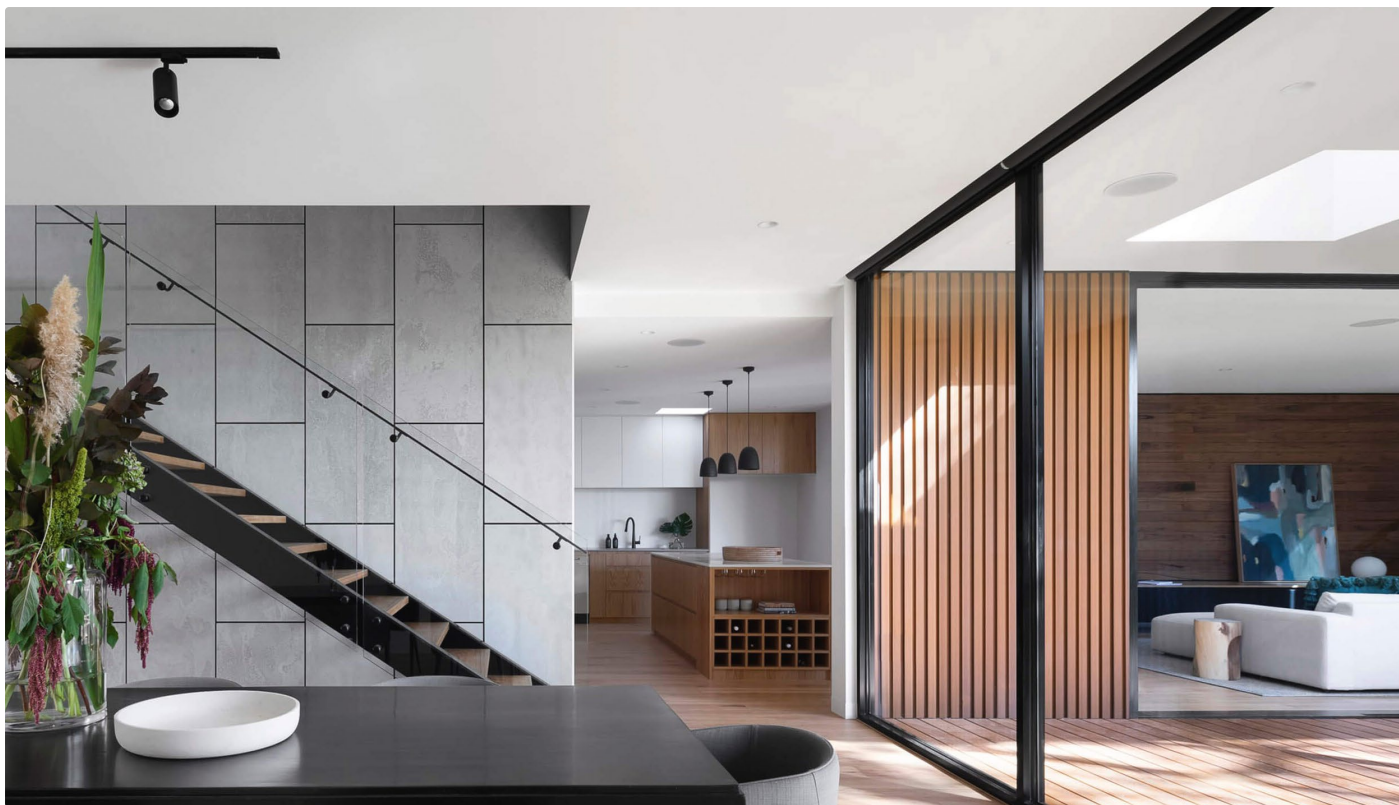
B-SYSTEM

INSTALLATION SOLUTIONS



Dryboxx

Acoustically Optimized Backbox
for Suspended Ceilings & Drywall



Drywall



Ceiling



Wall



Vapour Barrier

Acoustically optimized installation backbox for suspended ceilings and drywall constructions

For ambitious audio listening or home cinema use, the Dryboxx delivers optimum sound support with simultaneous sound insulation thanks to its clever design and high-quality materials - and also provides secure protection in drywall and suspended ceilings.

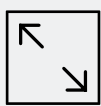
Standardized integration for ceilings and walls

The Dryboxx is designed for all common drywall grid dimensions and fits easily and smoothly into any standardized drywall installation workflow or perfectly integrates into plenum ceilings. Thereby, the specified standard sizes have the ideal volume for all premium built-in speakers. The airtight Dryboxx is also suitable for ceilings with vapor barriers.



Suspended Ceilings and Drywall

Universal, lightweight, stable and acoustically optimized backbox for any drywall installation



Universal

Thanks to numerous standard sizes suitable for almost all speaker sizes and speaker models



Sound Support & Protection

Supports the sound quality of the installation speaker, minimizes air-borne and structure-borne noise and protects against moisture and dust

Optimal decoupling and full sound development

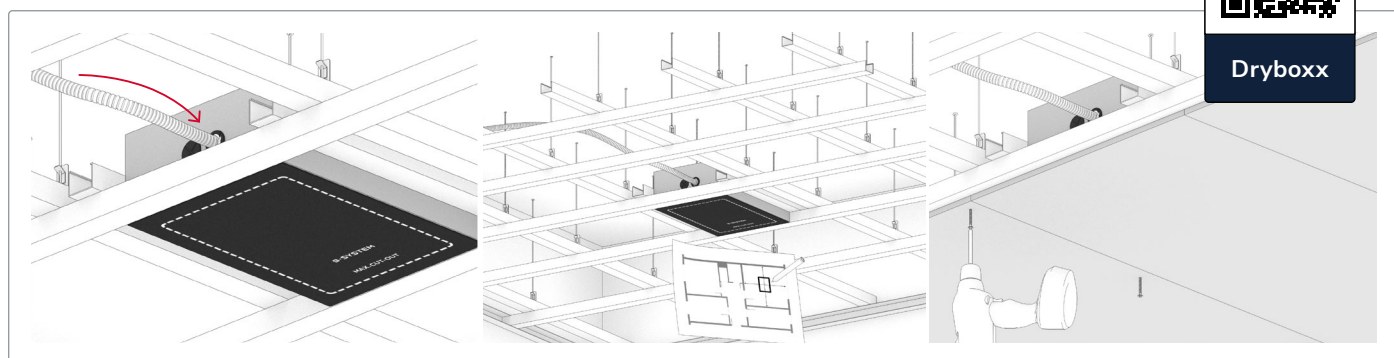
Dryboxx backboxes are made of high-quality, robust MDF panels, protect against vibration thanks to the decoupling mat and significantly reduce structure-borne noise and reduce sound leakage. Dryboxx backboxes are fully prepared, ready for installation and easy to mount, including printed maximum cut-out and accessories.

- ✓ Modular product in eight standard sizes for suspended ceilings and drywall construction walls
- ✓ Low weight and high stability
- ✓ Excellent vibration damping
- ✓ High-performance audio reproduction
- ✓ High airborne and structure-borne sound insulation
- ✓ Reduces sound leakage
- ✓ Suitable for ceilings with vapor barrier
- ✓ Glued-in rubber plugs for cables and ductwork
- ✓ Adapted to all common drywall grid dimensions

Product	Volume	Dimensions	Cut-out Dimensions	
Dryboxx XS	8.80 l	430 × 330 × 97 mm	circular: max. 260 mm	square: 330 × 230 mm
Dryboxx S	15.00 l	430 × 330 × 147 mm	circular: max. 260 mm	square: 330 × 230 mm
Dryboxx M	21.20 l	430 × 330 × 197 mm	circular: max. 260 mm	square: 330 × 230 mm
Dryboxx L	36.90 l	555 × 430 × 197 mm	circular: max. 360 mm	square: 455 × 330 mm
Dryboxx wall XS	15.30 l	555 × 430 × 97 mm	max. 455 × 330 mm (L × W)	
Dryboxx wall S	24.40 l	670 × 555 × 97 mm	max. 570 × 455 mm (L × W)	
Dryboxx wall M	33.40 l	910 × 555 × 97 mm	max. 810 × 455 mm (L × W)	
Dryboxx wall L	42.50 l	1150 × 555 × 97 mm	max. 1050 × 455 mm (L × W)	

i All Dryboxx backboxes are suitable for both ceilings and walls.

To the installation guide:



B-System GmbH

B-System backboxes are standard solutions for the easy integration of loudspeakers and technology in concrete ceilings, brick or concrete walls and in drywall constructions.

Our system architecture allows for a wide range of options, even for demanding applications, and is suitable for all common loudspeaker brands and models.

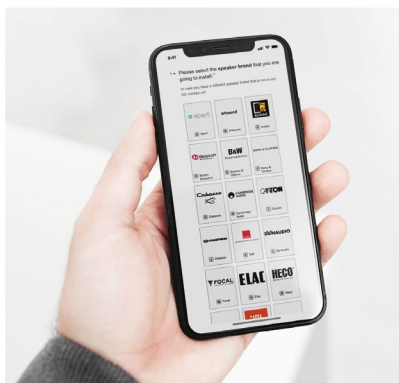
We use only high-quality and robust components. Our backboxes support the audio quality of all built-in

speakers and protect the technology from dirt, moisture, dust and insects.

Our products have been in use thousands of times world-wide for many years, our installation workflows are established and standardised. B-System customers and partners have access to numerous planning documents, data sheets and installation instructions.

The B-System team will be happy to consult you personally!

Easily find the right backbox for your loudspeakers:



**Backbox
Finder**

Downloads:



Downloads



Warehouse
3,000 sqm



Shipping
Worldwide



Tools
Backbox Finder



Warranty
3 Years



Consultation
Individual

Quality



Made in Germany